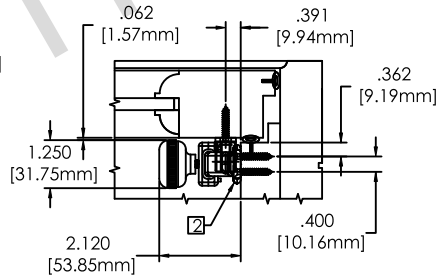
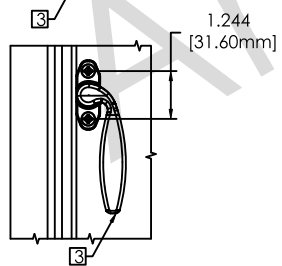
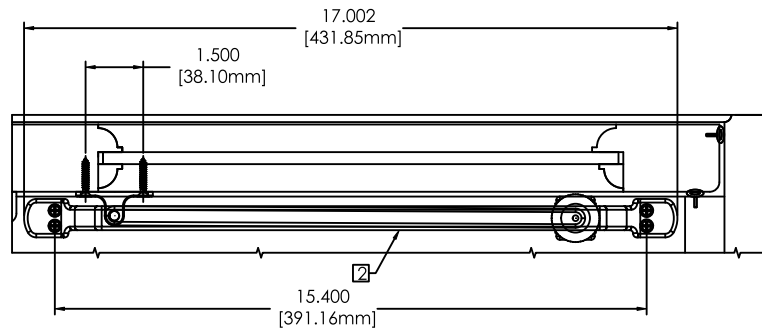
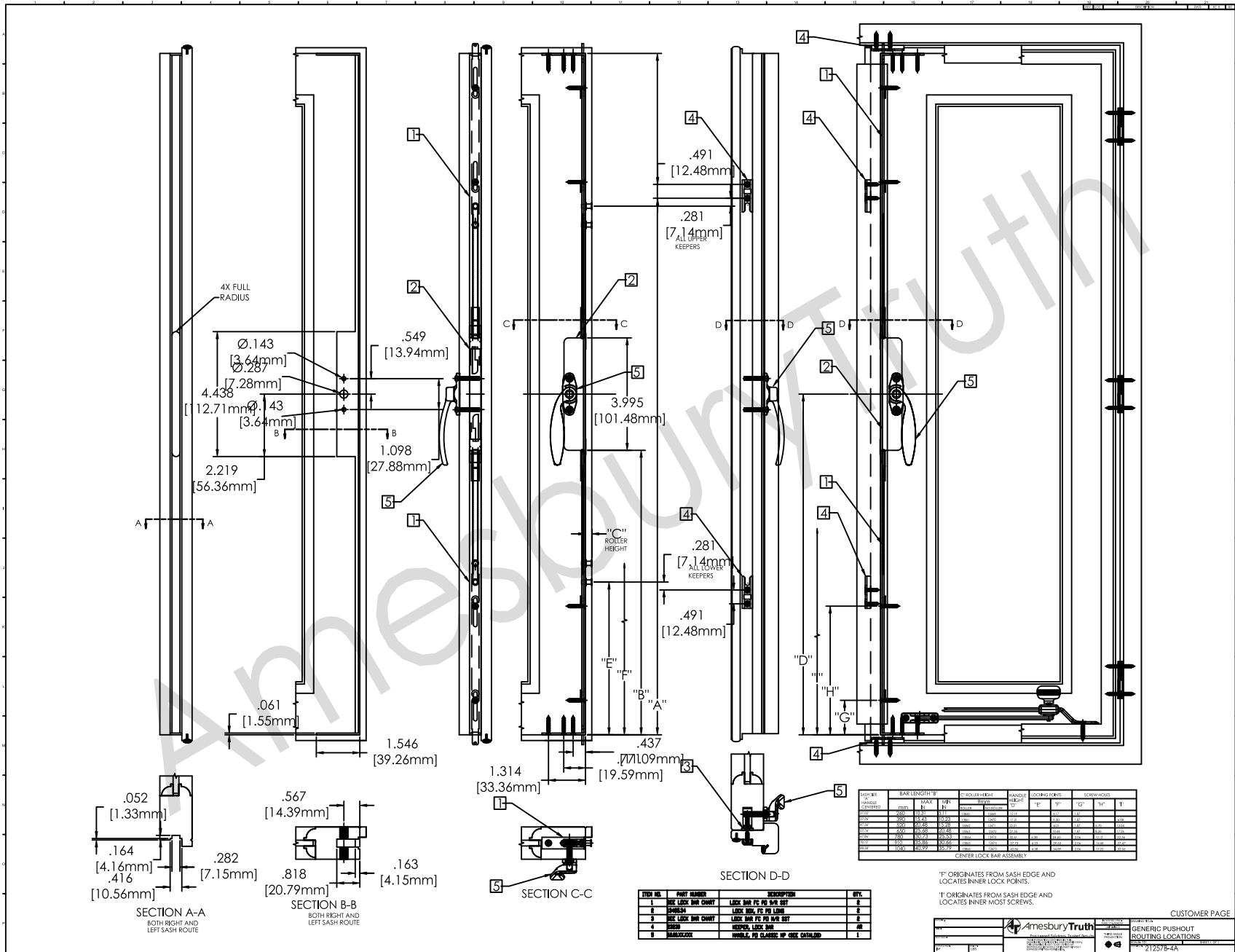


SCREEN HINGE AND ROUTE LOCATION

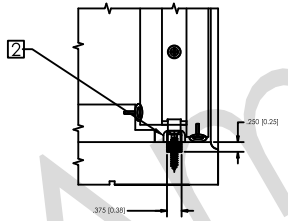
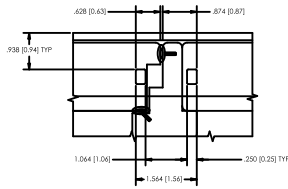
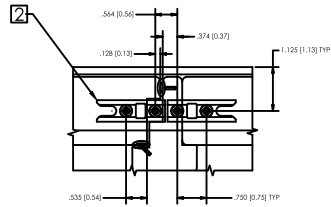


ITEM NO.	PART NUMBER	DESCRIPTION	QTY.
1	21257-001	HINGE, BUTT SCREEN METAL, LH ORALIZATION RD	2
2	21257-002	STAY BAR 12" - BALANCE AND 17" BALANCE RD	1
3	21257-003	SCREEN HANDLE	1



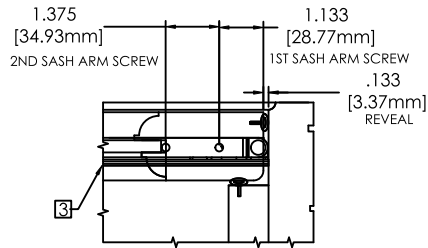


SHOOT BOLT KEEPER AND HOLE ROUTE LOCATION

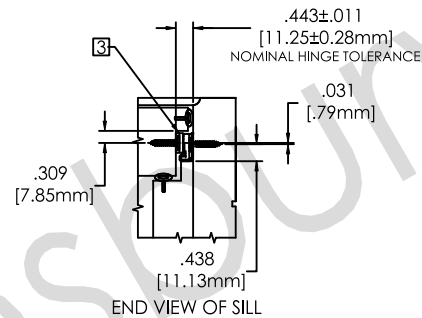


BOLT HOLE ROUTING

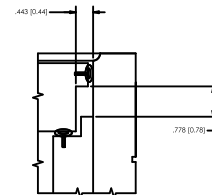
SASH HINGE LOCATION AND ROUTE



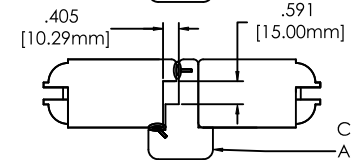
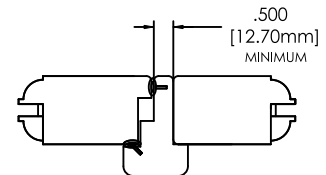
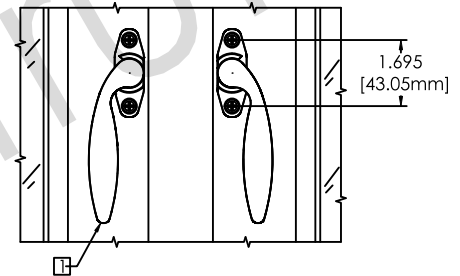
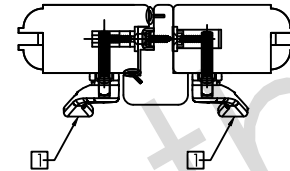
TOP VIEW



END VIEW OF SILL



SASH HANDLES



CONCEPTUAL ASTRAGAL

PROFILE ROUTING FOR FRENCH STYLE WINDOW

ITEM NO.	PART NUMBER	DESCRIPTION	QTY.
1	SHOOTBOLT	SHOOTBOLT, PD CLASSIC UP AIR OPERATOR HD	AN
2	SHOOTS	SHOOTS, L250, 250	AN
3	SHOOT BOLT CHAMF	SHOOT BOLT CHAMF, 1/2" DIA, 1/4" HGT, 1/4" DIA	1
4	SHOOT BOLT CHAMF	SHOOT BOLT CHAMF, 1/2" DIA, 1/4" HGT, 1/4" DIA	1
5	SHOOT BOLT CHAMF	SHOOT BOLT CHAMF, 1/2" DIA, 1/4" HGT, 1/4" DIA	1

HIGH FRICTION PUSHOUT HINGE (Stainless Steel is Standard)				Maximum Recommended (sash)			
Hinge Size/Type	Arm & Track Assembly P/N	KD Arm Assembly P/N	Stops Used	Width (in.)	Height (in.)	Weight (lbs)	To Meet AAMA
10" Egress	14.60.00.005/006	14.60.00.007/008	No Track Stops	18	38	29	Commercial
10" Egress	14.60.00.005/006	14.60.00.007/008	No Track Stops	20	42	29	Residential
14" Wash	14.61.00.005/006	14.61.00.007/008	No Track Stops	24	46	47	Commercial
14" Wash	14.61.00.005/006	14.61.00.007/008	No Track Stops	26	54	47	Residential
10" Wash	14.60.00.001/002	14.60.00.003/004	No Track Stops	24	54	54	Commercial
10" Wash	14.60.00.001/002	14.60.00.003/004	No Track Stops	28	56	54	Residential
10" Wash	14.60.00.001/002	14.60.00.003/004	33047/8	34	60	82	Commercial
10" Wash	14.60.00.001/002	14.60.00.003/004	33047/8	36	66	82	Residential
10" Egress	14.60.00.005/006	14.60.00.007/008	33045	36	66	90	Commercial
10" Egress	14.60.00.005/006	14.60.00.007/008	33045	36	72	90	Residential
14" Wash	14.61.00.005/006	14.61.00.007/008	26110	36	72	100	Commercial
14" Wash	14.61.00.005/006	14.61.00.007/008	26110	38	76	100	Residential



GENERIC PUSHOUT ROUTING LOCATIONS
21257-3-A

CUSTOMER PAGE